

ANSWER

Diagnosis in brief: Sarcoidosis.(X ray shows B/L hilar lymphadenopathy+H/o erythema nodosum+chronic cough+biopsy findings)

Q.1)Suggest a blood test that has diagnostic importance in this case.

Ans)Blood ACE(Angiotensin Converting Enzyme)levels.Raised titres are highly indicative of sarcoidosis.

Q.2)Explain the abnormality in the serum electrolyte assay.

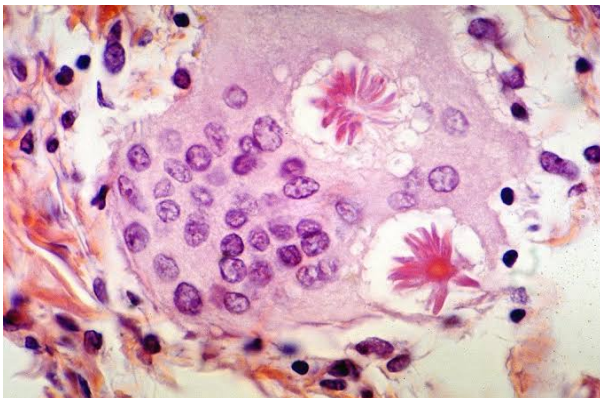
Ans)There is definite hypercalcemia(Normal Ca^{2+} levels range between 9-11 mg/dl,in this case its 14 mg/dl)here as the granulomas actively produce 1,25-dihydroxyvitaminD1.

Q.3)Identify the rash as complained by the patient.

Ans)Rash on the shins with tenderness and erythema and the given clinical history,is highly suggestive of erythema nodosum.

Q.4)Identify the histology slides A and B.(Name the figures shown in them)

Ans)SlideA-Asteroid body(Stellate inclusions within giant cells)



Slide B-Schaumann body(Lamimated concretions of calcium and proteins)

